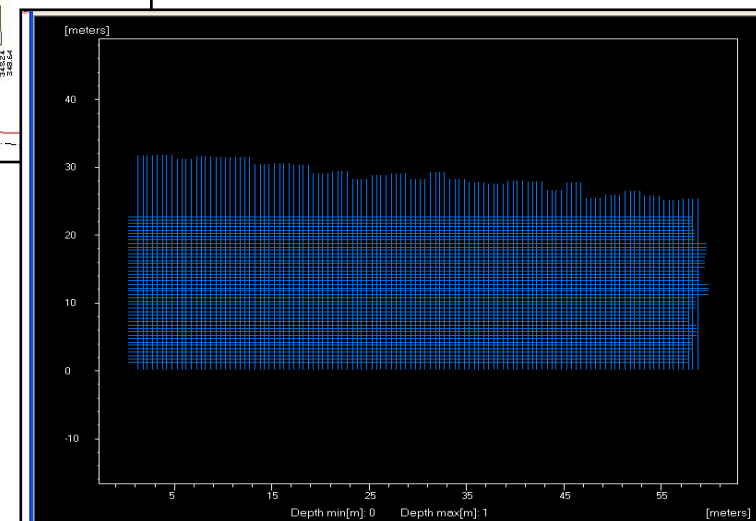
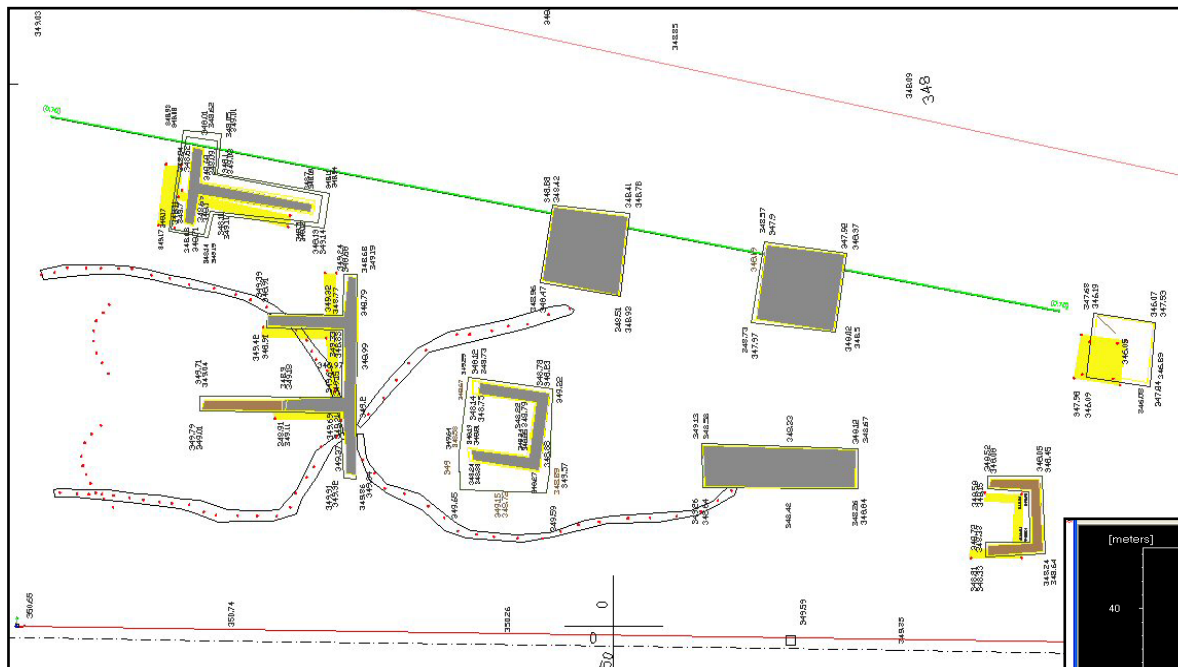


# GeoRadar Division

## *GPR site testing in Rovereto with Hi-MOD system*

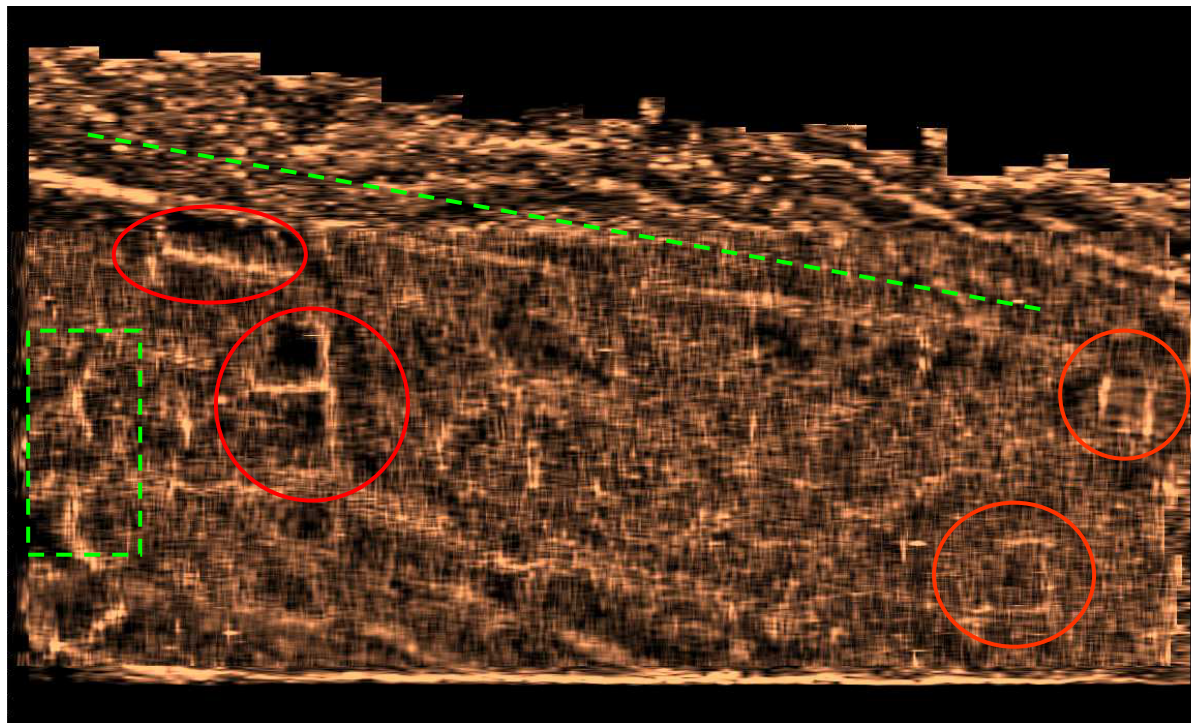


# Testing Rovereto Field



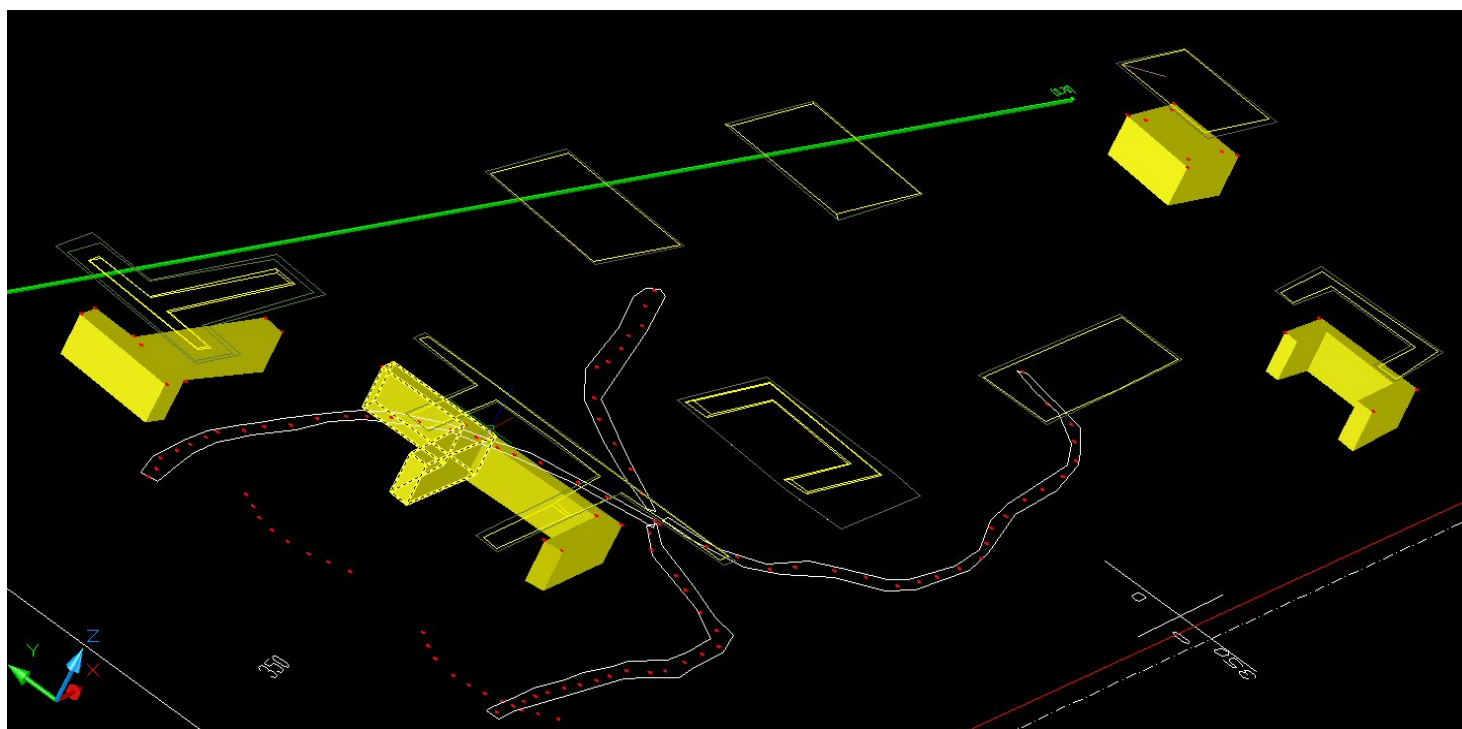
The test area is a 1500 square meters wide trapezium. Many T and L scans were made to detect well known buried structures.

## GPR Tomography Results



Depth: 0,7m. Looking at the tomography we easily detect some of the hidden targets (red circles). The green line represents an unsignaled pipe while the green box shows a couple of strong reflections of unknown origin. The final step of the survey is mapping our discoveries using a CAD interface.

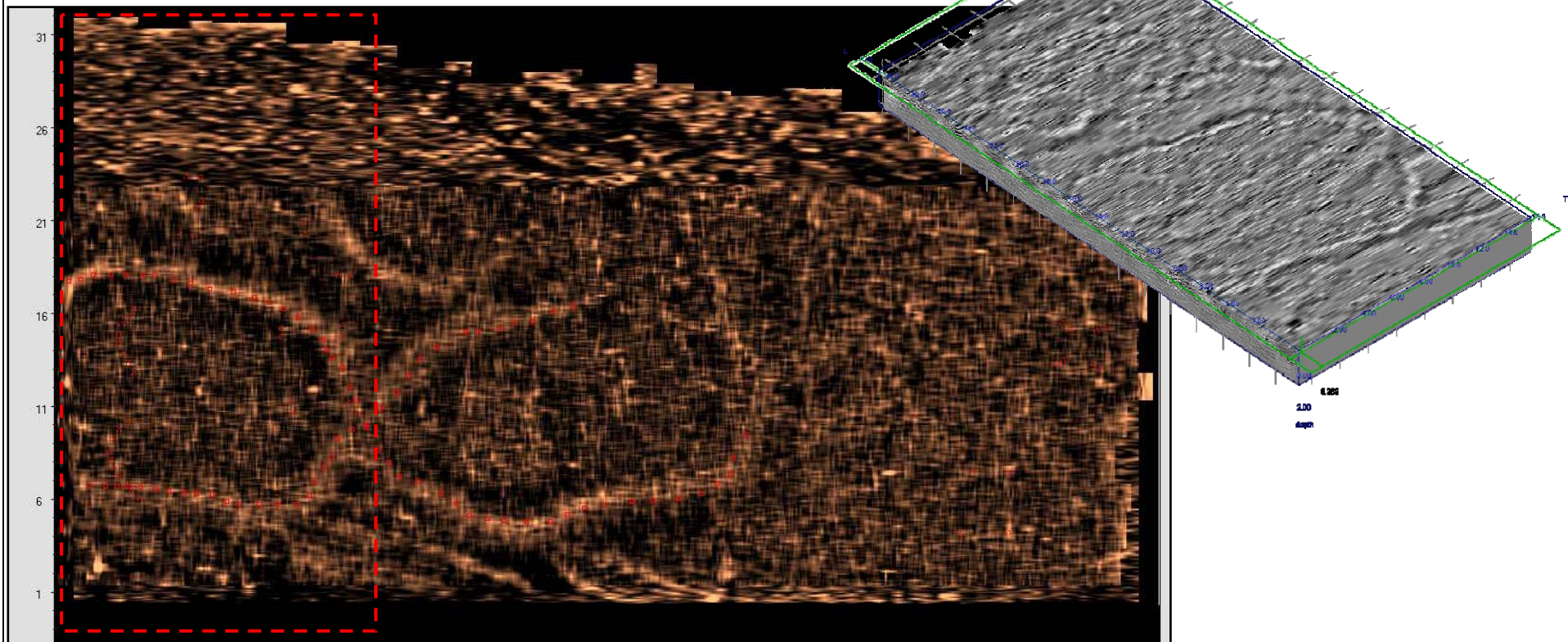
## GPR Tomography Results



The final step of the survey is mapping our discoveries using a CAD interface.

# GPR Tomography Results

## *Bonus Feature*



Depth: 0,3 m. An X-shaped pattern. It can be interpreted as some sort of biological track.