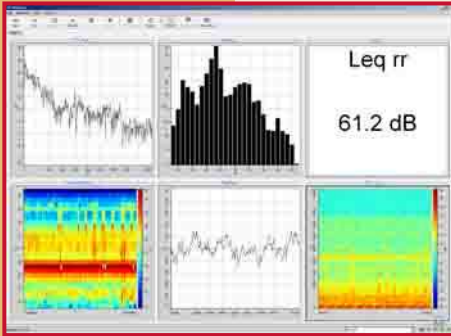


Sound and Vibration Analysis



NetdB PRO-122 meets your requirements for the everyday use of an efficient S&V analyzer!

Indeed this complete package composed of a double NetdB-DAQ12 platform with the full-featured versatile dBFA Pro software suite is the perfect way for performing any NVH work in a most demanding and operational conditions with an increased flexibility:

- It's a Recorder
- It's a Sound and Vibration Analyzer
- It's a Troubleshooter
- It really makes your life easier

At an incredible price to performance ratio!



Full featured!

PRO-122

Key Features...

NetdB-DAQ12 Hardware Platform

- ▶ 2xNetdB-DAQ12 Front-end managing 12 channels, 24 bits, DC to 20 kHz
- ▶ AC/DC/IEPE instrumented inputs
- ▶ 2 generators, headphones and SPDIF outputs
- ▶ Patented Ethernet protocol, WiFi ready
- ▶ 100GB hard disk internal HD.
- ▶ Batteries operated

dBFA suite PRO software main features

- ▶ Recorder - Analyzer - Post-Processing
- ▶ Simultaneous signal recording and real-time multiprocessing and monitoring
- ▶ Average 1/n octave, 1/n octave vs. time
- ▶ A, B, C, Wb, and more than 20 standard weighting functions
- ▶ Average FFT, FFT vs. Time
- ▶ FRF calculation on spectra and signals
- ▶ Color spectrogram and Waterfall
- ▶ Tacho signal acquisition
- ▶ Signal edition
- ▶ Import of .wav files, Teac/Sony files, MatLab communication
- ▶ Sound Quality metrics and Criteria

Options

- ▶ Expandable to 36, 48, ... up to more than 1000 channels
- ▶ Order analysis, Time-Frequency, Impact testing, Sound Intensity
- ▶ Suitable for Acoustic Holography and Modal Analysis
- ▶ Complete set of transducers and accessories

Applications:

Sound and Vibration measurements, analysis and reporting

Improving products design vs. NVH characteristics

NVH analysis on transportation vehicles: automobiles, motorbikes, trains, ships, aircrafts, ...

Civil vibration on transportation infrastructure

Quality control

PRO-122 Technical Specifications

Features	PRO-122	Features	PRO-122
<p>Hardware NetdB-DAQ12</p> <p>PC Link (Type/seed):</p> <p>PDA Link (Type/seed):</p> <p>Storage:</p> <p>Base channel numbers:</p> <p>Maximum throughput rate:</p> <p>Channel input connectors:</p> <p>Signal output:</p> <p>Digital Input/Output:</p> <p>Digitization:</p> <p>Sampling Frequency:</p>	<ul style="list-style-type: none"> ▶ Ethernet 100Mbits connector RJ45 and 2 x USB II sockets (Rear panel) ▶ WiFi 802.11g 54Mbits for remote control ▶ 100 GB HDD (12 hours /continuous measurement with 12 channels @51.2kHz 24bit) ▶ 12 (2 units are provided!) ▶ 12-channel units can be chained Up to 51.2kHz 24bit on each channel of any NetdB-DAQ12 unit ▶ BNC with high rigidity frame ▶ 2 x BNC connectors ▶ RCA connector for SPDIF In/Out ▶ 24 bits linear ▶ 51.2kHz, 25.6kHz, 12.8kHz, 400Hz 	<p>Environmental</p> <p>Operating temperature:</p> <p>Storage temperature/humidity/Pressure:</p> <p>Operating position:</p> <p>Vibration resistance:</p> <p>Shock resistance:</p> <p>Vibration class:</p> <p>Noise emission:</p> <p>EMI:</p> <p>Safety:</p>	<ul style="list-style-type: none"> ▶ 0°C to 60°C ▶ -10 to 50°C, 10 - 90% RH (no condensation), 500 - 1060 hPa ▶ Horizontal and Vertical ▶ 10ms-2 (9-200Hz), 3mm (2-9Hz) operating ▶ 250ms-2 (2ms) operating ▶ EN60721-3-4 class 4M5 ▶ LWA 49dBA with fan running, LWA 33dBA fan off, software selectable (ISO7779) ▶ EN55011, EN55014, EN61000-4.2, EN61000-4.3, EN61000-4.4, EN61000-4.5, EN61000-4.6, EN61000-4.11 ▶ UL3101-1; CSA C22.2 No.1010.1; EN 61010-1 A1+A2
<p>Analog input Characteristics</p> <p>Input impedance:</p> <p>Input range:</p> <p>Maximum allowable voltage:</p> <p>Sensor power supply:</p> <p>Anti-aliasing low-pass filter cut:</p> <p>Dynamic range:</p> <p>External trigger:</p>	<ul style="list-style-type: none"> ▶ 1MΩ ▶ 10V rms (-15V to +15V), 1V rms (-1.5V to +1.5V), 100mV rms (-150mV to +150mV) ▶ -20/+30V peak ▶ IEPE and TEDS (IEEE1451.4) compliant ▶ DC, AC 0.3 Hz, AC 20 Hz ▶ 105dB ▶ BNC connector 	<p>Physical</p> <p>Dimensions:</p> <p>Weight:</p> <p>Power supply</p> <p>Battery:</p> <p>Main adaptor:</p> <p>Power consumption:</p> <p>Car adaptor supplied:</p>	<ul style="list-style-type: none"> ▶ 250mm(W) x 85mm(H) x 263mm(D) excluding projections ▶ 3.5kg ▶ Internal NiMH 4000mAh, 1H45 continuous operation 12 channels ▶ External Main Adaptor 100/240VAC - 50-60 Hz ▶ 20W ▶ DC 9-18V with jack

Features	PRO-122
<p>Software dBFA Suite (Recorder - Analyzer - Post-Processing):</p>	<ul style="list-style-type: none"> ▶ Simultaneous signal recording and real-time multiprocessing and monitoring, post processing analysis (Average 1/n octave, 1/n octave vs. time, Average FFT, FFT vs. Time, FRF...) ▶ Calculation on spectra and signals, ▶ Color spectrogram and waterfall, ▶ Tacho acquisition, ▶ Signal edition, ▶ Import of Teac/Sony files... ▶ Reporting Module. Analyzer and post-processing option
<p>Software options (included in PRO-122A):</p>	<ul style="list-style-type: none"> ▶ RT Automation (User-defined sequential acquisition procedure); ▶ Transient / Impact mode: Coordinates management, user defined windowing, Me' scope format export, Reporting Module both in Analyzer and post-processing; MATLAB communicator in Post-processing ▶ Order (Analysis and Tracking in Real Time and post-processing) ▶ Time-Frequency Transforms, De-noising, Convolution (Post Processing on signals)

Ordering Information:

NDB1002000 (x2): NetdB-DAQ12 data acquisition front-end, AC/DC/IEPE inputs, headphones and SPDIF outputs, Patented Ethernet protocol, 100GB hard disk.

SFA4050000: Software dBFA Recorder - Analyzer - Post-Processing: simultaneous signal recording and real-time multiprocessing and monitoring, post processing analysis (Average 1/n octave, 1/n octave vs. time, Average FFT, FFT vs. Time, FRF...), calculation on spectra and signals, color spectrogram and waterfall, tacho acquisition, signal edition, import of Teac/Sony files....

Options (included in PRO-122A):

SFA4060000: RT Automation

SFA4061000: Transient / Impact mode

SFA4022000: MATLAB communicator

SFA4044000: Order Analysis and Tracking

SFA4038000: Time-Frequency Transforms, Denoising, Convolution... **Data format:** CMG documented, UFF, MatLab, WAV, ASCII.

The presented characteristics are subject to change without notice. Rev:03/2007

01db-Metravib

200, Chemin des ormeaux
F-69578 Limonest Cedex
Tel.: +33 (0)4 72 52 48 00
Fax.: +33 (0)4 72 52 47 47

nvh@01db-metravib.com
www.01db-metravib.com

