



Combining the benefits of three unique sensors into a small Triple Camera platform including IR, UV, and TV.

A premium choice for Powerline Inspection, firemapping, oil spill detection and pipeline inspection.

Gyro Stabilized Camera Gimbal

For stable imaging a fully digital 4-axis active gyro stabilization system compensates for the aircraft movements and vibrations.

Reliability and Lightweight

In order to insure a reliable and lightweight gimbal solution, the Swesystem gimbals are designed and manufactured using an aluminum structure combined with composite covers.

Superior Performance using LW Thermal IR

High Precision measurement accuracy, superb image quality and long wave solar reflection immunity provides outstanding performance for most applications.

Thermal Radiometric output

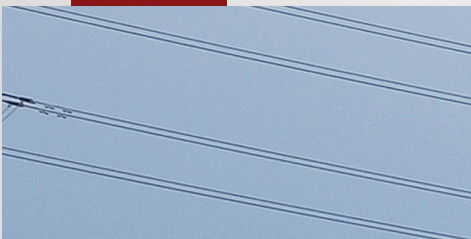
The radiometric output provides full thermal resolution digital images with real time temperature measurement for efficient Thermal inspections.

Corona Detection

The Bi spectral UV camera is the most sensitive bi-spectral imager with absolute solar blind performance that offers professional Corona and Arcing detection.

On Screen Graphics

On Screen graphics indicating Time and Date, GPS position, etc



Gimbal System

| | |
|---------------|--|
| Type | Four-Axis Active Gyro-Stabilized Gimbal |
| Stabilization | Typical 25 micro Rad |
| Coverage Az | 360° Continuous |
| Coverage El | +20° to -120° |
| Dimension | Ø300 mm (11.8 in) |
| Weight | 20 kg (44lb) (depending on configuration) |
| Power Req. | 20-30 VDC, 300W (depending on configuration) |

Thermal IR Camera

| | |
|----------------|-----------------------------|
| Detector | Uncooled microbolometer |
| Lens options | 24°x32° or 12°x16° |
| Array Size | 1024x768 pixels |
| Spectral Range | 7.5-14µm |
| Focus | Manual and Auto Focus |
| Digital Zoom | Yes |
| Temp. Accuracy | +/-1.5°C, +/- 2% of reading |

UV Camera

| | |
|----------------|--|
| Detector | Bi Spectral, Solar blind Imager |
| FOV | 6,4° x 4.8° |
| UV Sensitivity | 3×10^{-18} Watt/cm ² |
| Focus | Auto Focus |

TV Camera

| | | |
|----------------|---------------------|---------------------|
| Type | HD (up to 1080p) | PAL / NTSC |
| Image Sensor | 1/2.8" CMOS | 1/4" HAD CCD |
| Optical Zoom | 20x (55.4° to 2.9°) | 36x (57.8° to 1.7°) |
| Digital Zoom | Yes | Yes |
| Low light mode | Yes | Yes |

