

Opera Duo

First class underground surveys



Dual frequency antenna lets you see shallower as well as deeper targets.

Advanced GPS integration allows you to perform professional surveys.

New design and parts make it practically indestructible.

ALL THESE FEATURES IN THE MOST INTUITIVE GROUND PENETRATING RADAR EVER.

IDS Ingegneria Dei Sistemi S.p.A.

GeoRadar Division, Via Enrica Calabresi 24, 56121 Pisa (PI) Italy
Tel. +39 050 31241 Fax +39 050 3124201
georadarsales@idscorporation.com

IDS Brasil Engenharia de Sistemas Ltda.

Rua Haddock Lobo, 1.307, 5º Andar, sala 51, Cerqueira César,
Cep 01414-003 São Paulo-SP, Brazil
Tel. +55 11 3060 9364 Fax +55 11 3896 1951
idsbr@idscorporation.com

IDS North America Ltd.

418 Sherbrooke Street East, Montreal, Quebec H2L 1J6, Canada
Tel. +1 514 789-0082 Fax +1 514 398-0527
idsna@idscorporation.com

IDSNA, Inc.

15000 W 6th Ave., Suite 104, Golden, CO 80401, USA
Phone: +1 303 232 3047 Fax: +1 720 519 1087
idsna@idscorporation.com

IDS Australasia Pty Ltd, Perth

Unit 8, 3 La Fayette Boulevard, Bibra Lake, Western Australia, Australia 6163
Tel: +61 8 9418 8719 Fax: +61 7 320 55536
idsau@idscorporation.com

IDS Australasia Pty Ltd.

Unit 5, 3-5 Hinkler Court, Brendale, Queensland, Australia, 4500
Tel. +61 7 3205 5524 Fax 61 7 3205 5536
idsau@idscorporation.com

IDS Ingegneria Dei Sistemi S.p.A.

Via Enrica Calabresi 24, 56121 Pisa (PI) Italy
Tel. +39 050 31241 Fax +39 050 3124201
ids@idscorporation.com
www.idscorporation.com



IDS: The leader in multi-frequency and multi-channel
Ground Penetrating Radar

www.georadar.idscorporation.com

Opera Duo Features



Superior maneuverability

A large, comfortable handle to make pushing and pulling easier, large wheels for better control and a balanced weight distribution to offer the minimum resistance.



Robust

Engineered and built to withstand the harshest field conditions, the Opera Duo is suitable for heavy use in every type of terrain.



Easy to use

Opera Duo uses an intuitive interface. Just click the start button to receive the best performance in every soil condition. There is no longer a need to perform calibration or adjust any other manual settings.



Results delivered on site

IDS's proprietary solution tracks the position of the radar and marks targets automatically. All of the acquired data can be exported to CAD and a report can be produced directly on site.



Spray marker kit



Easy to transport, foldable trolley

Opera Duo configuration:

Pivoting head

provides better contact on uneven terrain and reduces signal loss

Remote controlled spray paint

in order to mark your findings

Dual-frequency antenna

to locate deep and shallow targets simultaneously



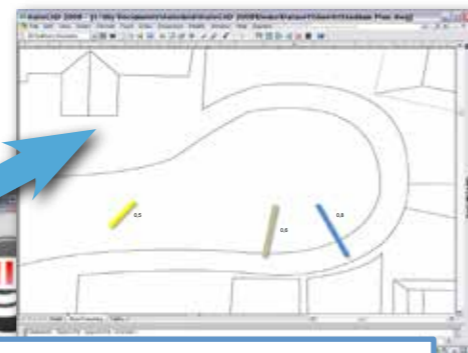
Adjustable handle always gives you the perfect grip

Dedicated pole mounted GPS kit

No exposed cables, providing peace of mind assurance of no ruptures in the field



Large handle for enhanced maneuverability



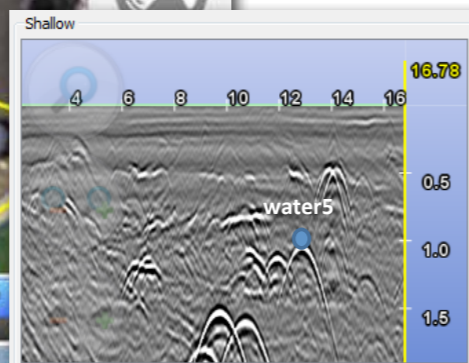
On-Site digital map exportation



Current position

GPS path

Targets detected



Shallow and deep antenna radargram

SOFTWARE SPECIFICATIONS

OVERALL WEIGHT (PC AND BATTERY NOT INCLUDED):	24 kg two wheels (53 lbs) 27 kg four wheels (59 lbs)
RECOMMENDED LAPTOP:	Panasonic CF-H2
MAX. ACQUISITION SPEED:	more than 10 kph (6 mph)
POWER CONSUMPTION:	13.3 W
POSITIONING:	2 integrated encoders and/or GPS - Total station
SCAN RATE PER CHANNEL (@512 SAMPLES/SCAN):	381 scans/sec
SCAN INTERVAL:	42 scans/m
POWER SUPPLY:	SLA Battery 12VDC 12 AH

ANTENNA SPECIFICATIONS

ENVIRONMENTAL:	IP65
ANTENNA FOOTPRINT:	40 x 50 cm
NUMBER OF HARDWARE CHANNELS:	2
ANTENNA CENTRAL FREQUENCIES:	250 MHz and 700 MHz
ANTENNA ORIENTATION:	Perpendicular, broadside
SAMPLING FREQUENCY:	400 kHz

SYSTEM SPECIFICATIONS

OPERA DUO ACQUISITION SOFTWARE

- Automatic calibration for an easy and quick start-up
- Metric and imperial units
- Visualization and storage of data from both antennas
- Capability to mark targets and pipes in the software and in the ground
- Available in more than 20 languages
- Connection for an NMEA positioning device
- Export to CAD
- Export job reports
- Advanced grid acquisition procedure