

*Instruction Manual*

# PEX Extension Kit

---



## Notices

Measurand shall have no liability for incidental or consequential damages of any kind arising out of the sale, installation, or use of its products. Please read this document and any notes and instructions carefully before proceeding with installation and operation.

ShapeAccelArray is covered by patents including: 6127672, 6563107, 7296363, WO 02/055958, WO 02/055958, WO 98/41815 and others pending.

Measurand Software is copyrighted. Any unauthorized use is strictly prohibited.

Revision No.: 0

## Table of Contents

Table of Contents .....	iii
1. Introduction .....	1
2. Description .....	1
3. Using the PEX Extension Kit .....	2

## 1. Introduction

PEX tubing is used in SAA construction in order to protect the communication cable from damage and to provide a secure way of retrieving the SAA. The Pex tubing is resistant to twist and helps maintain azimuth control for the SAA when the top of the SAA is not visible at the surface. Each SAA comes with 1.5 m (5') of  $\frac{3}{4}$ " PEX attached at the top. The PEX Extension Kit is used in situations where this length is not enough to reach the surface or end of a borehole.

## 2. Description

The PEX Extension Kit includes 5 PEX couplers with stainless steel braid, 20 PEX crimp rings, and a crimping tool. Clients can either source additional  $\frac{3}{4}$ " PEX locally, or buy it directly from Measurand. The PEX couplers provided in the kit are designed to provide a solid mechanical connection to hold the weight of the SAA, and to resist any twist at the PEX connection; something that traditional PEX couplers cannot do. It is possible to purchase sets of 5 PEX couplers and 20 PEX crimp rings without the crimping tool, contact Measurand for more details. The items required to extend the PEX on the SAA are shown in Figure 2.1.

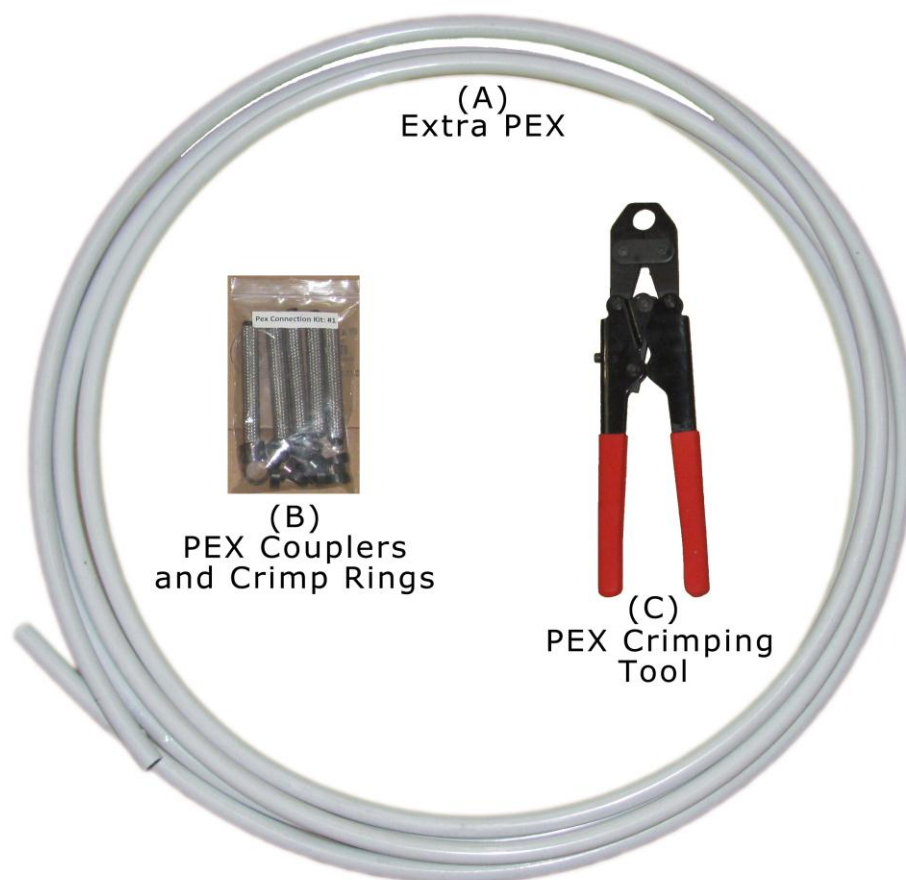


Figure 2.1 – Items required to extend PEX on SAA. (A) extra PEX, (B) PEX couplers and crimp rings, (C) PEX crimping tool.

### 3. Using the PEX Extension Kit

In order to use the PEX Extension, follow the steps shown below in Figure 3.1 to Figure 3.4.

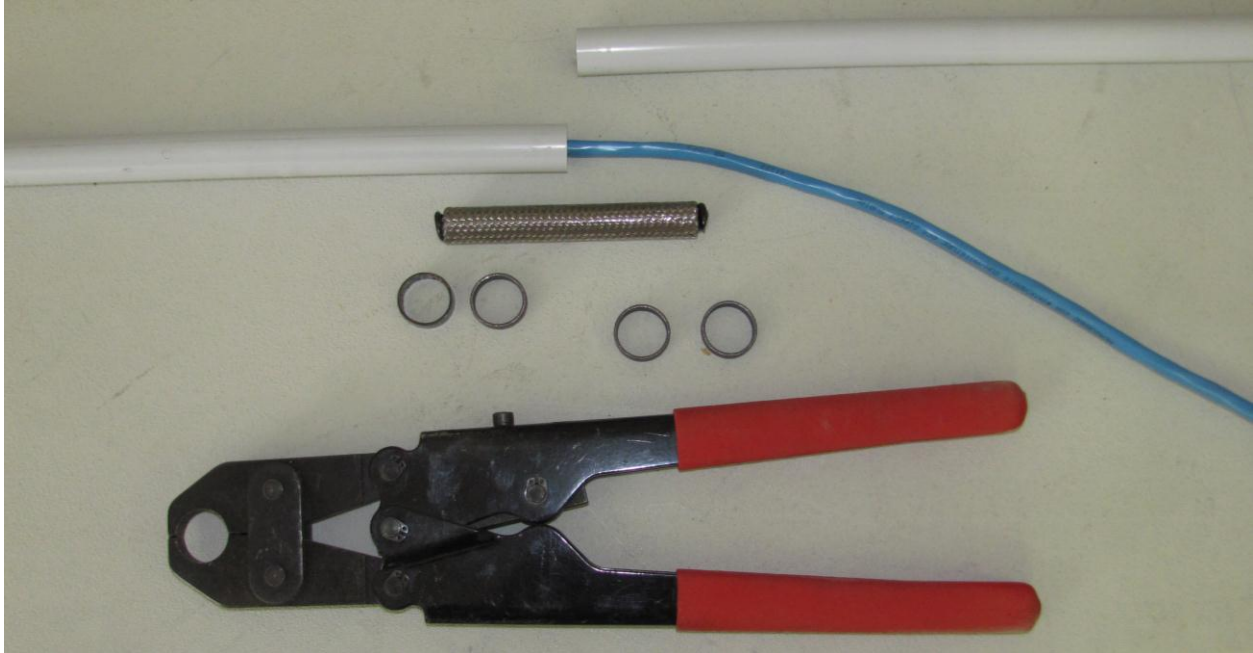


Figure 3.1 – Step 1. Assemble the extra PEX, 1 PEX coupler, 4 PEX crimp rings, and place with SAA

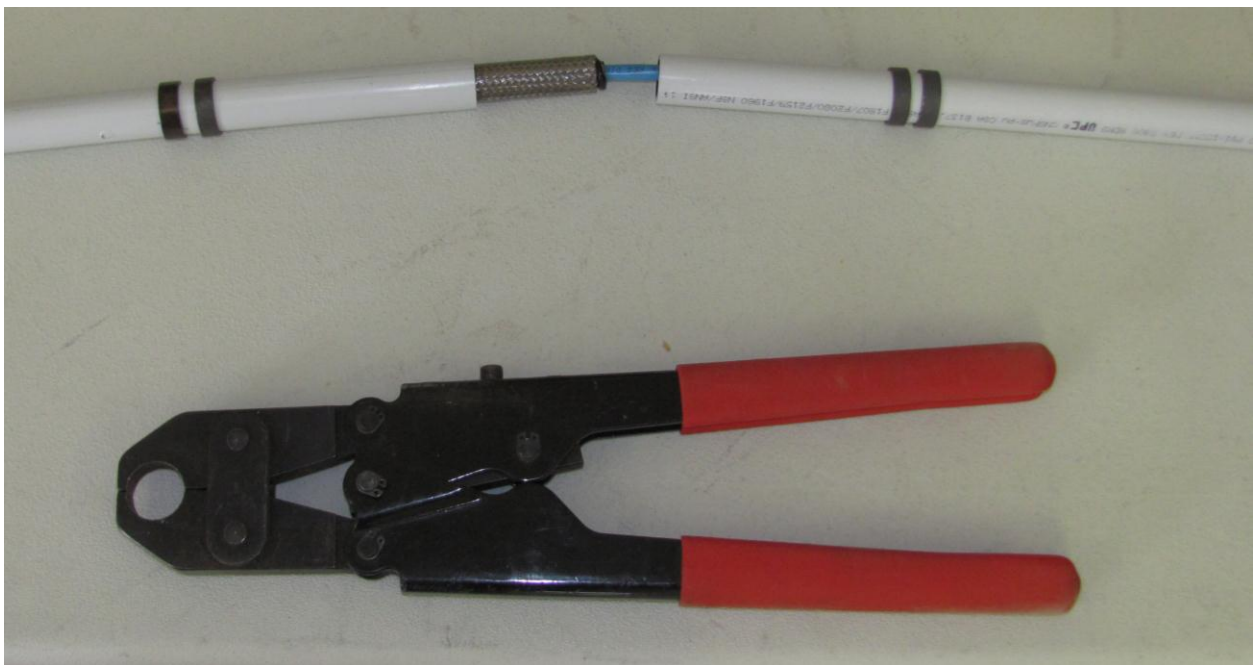
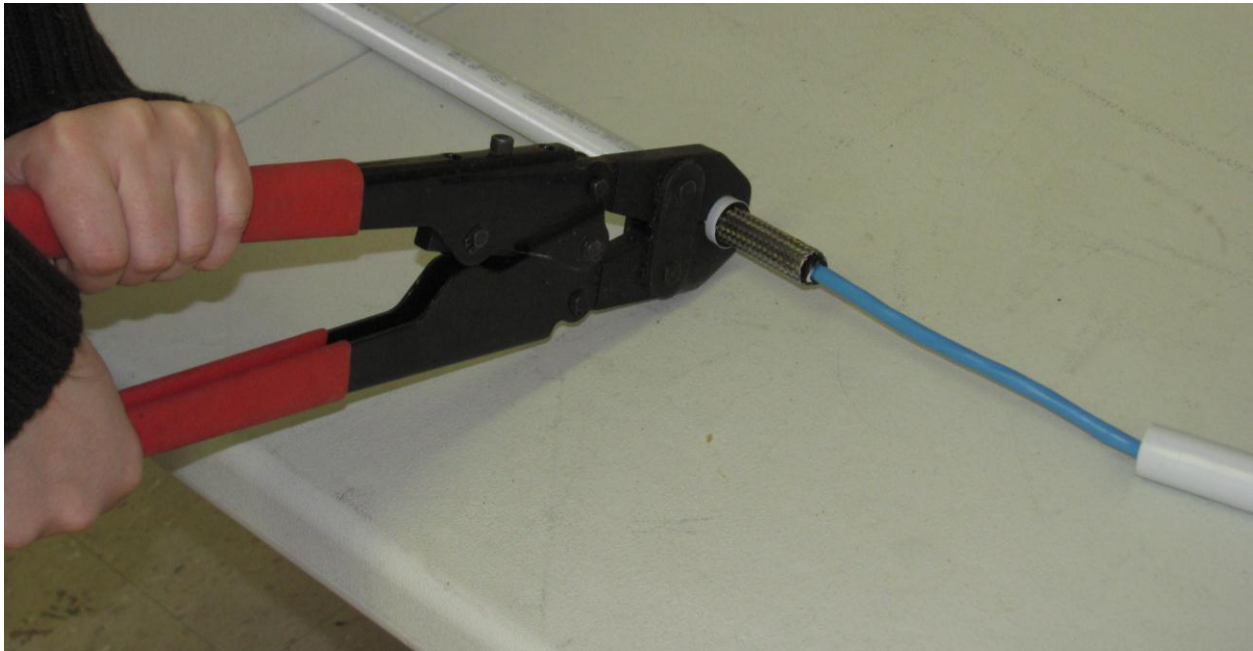


Figure 3.2 – Step 2. Place crimp rings on PEX, two on each side of connection, and thread PEX coupler and extra PEX over the communication cable. Push half of the PEX coupler into the PEX on one side of the connection, as shown above.



**Figure 3.3 – Step 3. Slip PEX crimp rings over the coupler and use the PEX crimping tool to secure them. When securing the crimp rings, first crimp the ring while holding the tool parallel to the ground, then crimp the same ring holding the tool perpendicular to the ground. Crimp two rings per side of the PEX connection.**



**Figure 3.4 – Step 4. Repeat Steps 2 and 3 for other side of PEX connection. The final result should resemble the assembly shown above.**