

SUCCESS STORY

Panoramic Video Utilizing Basler ace GigE Cameras Enhances Sports Video Analysis

Customer

- Customer: Match Analysis
- Location: Emeryville, CA, USA
- Industry: Sports Video & Statistical Analysis
- Year of Implementation: 2014

Application

Match Analysis is the leading pioneer in high performance video and statistical analysis tools for soccer. Video analysis in sports is a fast-paced and highly competitive industry where only the best technology platforms survive. Match Analysis has been providing top-tier professional clubs and national soccer federations with a variety of analysis services and tools for over 12 years.

Since the early days of the company, Match Analysis's product suite has evolved rapidly, providing video tools designed to leverage the knowledge and expertise that exists within the personnel of a club, while fundamentally changing the way managers and technical staff interact with players.

One key missing component identified by Match Analysis in video analysis was the reliance on broadcast video or a single human-operated digital camera. The resulting video is inappropriate for detailed analysis, with the view either too zoomed to capture all of the players or the angle too wide to show sufficient detail.

Match Analysis's K2 Panoramic Camera system guarantees that no event from a game ever goes unseen. The K2 Panoramic Camera provides a previously-unattainable view of the entire playing field and solves, once and for all, a fundamental problem faced by coaches and tacticians: that of being able to see everything that occurs.

Solution and Benefits

The K2 Panoramic Camera System is available as a fixed stadium installation and also as a portable solution, extending its reach to away matches, training grounds, and even other sports. The system utilizes three Basler ace GigE cameras to cover every inch of the pitch, and proprietary software to seamlessly stitch the three images into a single, high definition corner flag to corner flag view in real time.

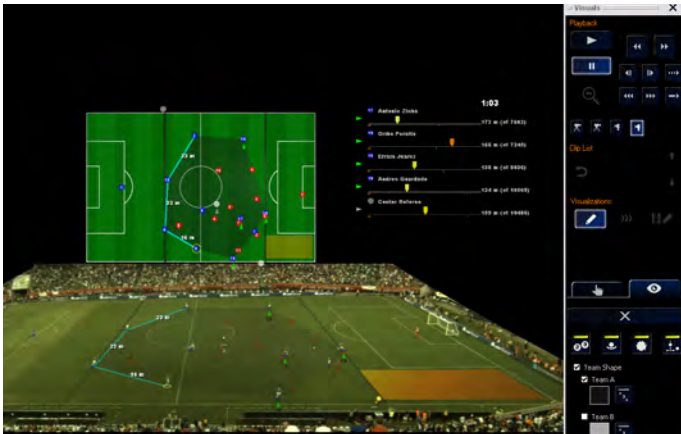
The result replaces makeshift wide-angle solutions and unnatural two-dimensional overhead animations with an ultra-high resolution video that covers the entire field and features a pan and zoom function to provide the user with complete control over the video they view. In addition, Match Analysis uses the resulting stitched video to accurately track all 22 players and the referees, using advanced object tracking software. Match Analysis then delivers a wide variety of tools and data for in-depth video and statistical analysis which provide the ability to draw dynamic animated graphics within the video itself - instantly and interactively.



Examples of Match Analysis K2 Panoramic Video System with Basler ace GigE Cameras



Match Analysis K2 Panoramic Video Full Pitch View Achieved with Basler ace GigE Cameras



K2 Panoramic Video with Player Tracking and Truview Visualizations

K2 Panoramic Camera Systems using Basler cameras are now installed in the stadiums of every major professional soccer club in North America. The systems are put to use for everything from the expected tactical analysis by clubs, to disciplinary sanctions, referee analysis, and even security reviews related to pitch invasions by fans, and issues in the stands.

A product demo of K2 panoramic video can be seen at <http://www.matchanalysis.com/k2.htm>

The pan and zoom function of K2 panoramic can be tried out at <http://matchanalysis.com/k2-pan-and-zoom-gallery.htm>

Technologies Used

- 3 Basler ace GigE cameras
- Software: fully customized Match Analysis K2 Panoramic Video Recording Software built on the pylon API

More Information

www.matchanalysis.com



Basler ace GigE Cameras

Basler AG

Germany, Headquarters

Tel. +49 4102 463 500
 Fax +49 4102 463 599
sales.europe@baslerweb.com
www.baslerweb.com

USA

Tel. +1 610 280 0171
 Fax +1 610 280 7608
sales.usa@baslerweb.com

Asia

Tel. +65 6367 1355
 Fax +65 6367 1255
sales.asia@baslerweb.com