

### dBJury

#### Key Benefits...

- Developed in partnership with psycho acousticians of international fame
- Listening sessions can be conducted at the same time at any place in the world
- Stand alone sound evaluation application

### dBJury

#### Key Features...

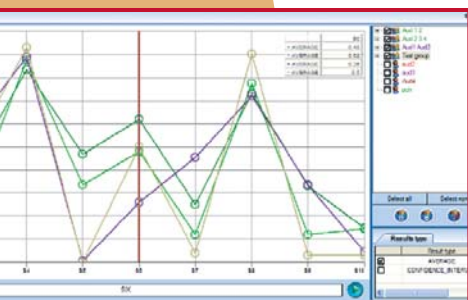
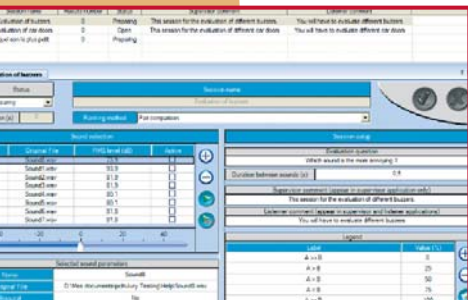


### The power of TCP/IP communication

- ▶ TCP/IP communication between a server application which controls the sessions database, and listener applications deployed on different PCs
- ▶ Safe databases stored on a unique PC. The results of the test are transferred in real time from the listener workstation
- ▶ The listeners are completely autonomous. The sound evaluation can be performed at any time, at any place without the assistance of a master person

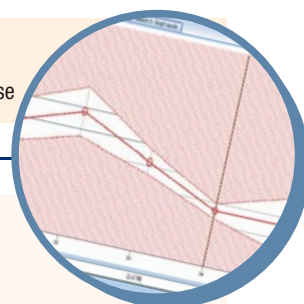
### The best algorithms and facilities for a relevant sound ranking

- ▶ Statistical algorithms implemented from the latest research of reputed research labs
- ▶ Creation of groups of listeners for comparative analyses
- ▶ Exportation of results for correlation with psychoacoustic parameters
- ▶ Exportation of preferences results for further analyses



# dBJury Technical Specifications

Features	dBJury
<b>Sound calibration</b>	<ul style="list-style-type: none"> <li>▶ Importation of calibrated wav files</li> <li>▶ Possibility to adjust the sound level manually or with a volume control</li> <li>▶ Calibrated levels capabilities for different sound cards (Vxpocket V2, Vxpocket 440, Lynx One)</li> </ul>
<b>Headphone equalization</b>	<ul style="list-style-type: none"> <li>▶ Provision of standard equalization filters (real-time effective)</li> <li>▶ Possibility to extend the list of equalization headphone filters (on request)</li> </ul>
<b>Methodology and statistical analyses</b>	<ul style="list-style-type: none"> <li>▶ Minimization of the evaluation subjectivity: wizard graphical principle, minimum choice principle, autonomy principle,</li> <li>▶ Methods of evaluation: absolute, paired comparison and mixed approach</li> <li>▶ Paired comparison according to Linear, Thurstone V, and BTL methods</li> </ul>
<b>Sessions set up</b>	<ul style="list-style-type: none"> <li>▶ Creation/edit/modification/duplication of sessions,</li> <li>▶ Possibility to define 3 modes for each session: preparing, open and close</li> </ul>
<b>Follow-up of the session in progress</b>	<ul style="list-style-type: none"> <li>▶ Indication of the evaluation stage for each listener in the supervisor application</li> <li>▶ Possibility to identify the listeners connected to the Jury testing server</li> </ul>
<b>Data edition and Export</b>	<ul style="list-style-type: none"> <li>▶ Group set-up</li> <li>▶ Mean and confidence interval display</li> <li>▶ Curve superimposition</li> <li>▶ Cursor for sound selection and playback</li> <li>▶ Preference result exportation in HTML format</li> <li>▶ Copy/paste of graphics</li> <li>▶ Exportation of the analysis results</li> </ul>



**PRODUCT REQUIREMENTS**  
 Recommended PC: Minimum configuration with Pentium IV™ (2.4 GHz) or Centrino™ (1.6 GHz) with 512MB RAM, 40GB HDD; XGA display; OS Win 2000 SP4 or Win XP SP1

**RELATED PRODUCTS**  
 Professional sound card (VxPocket V2, VxPocket 440, Lynx One)  
 High quality headphone (HD580, HD650)  
 Cortex Manikin MK2B  
 dBsonic psychoacoustic software

The presented characteristics are subject to change without notice. Rev: 08/2006

**01dB-Metravib**  
 200, Chemin des Ormeaux  
 F-69578 Limonest Cedex  
 Tel.: +33 (0)4 72 52 48 00  
 Fax.: +33 (0)4 72 52 47 47

industries@01db-metravib.com  
 www.01db-metravib.com

**Your local contact point :**

